

# Welcome! Year 10 Success Evening

We will start shortly.  
Please use the chat function  
to ask any questions as the  
session progresses.



**Predicted Grades**  
Understanding the data on  
MyChildAt School



2

**Pastoral Support**  
What pastoral support is available  
to students, both in and out of  
school?



4

**The Year Ahead**

What can we expect from the year  
(and a bit) ahead?



1

**Revision**

How do we learn?  
How can families support  
revision at home?



3



# The Year (and a bit) Ahead



1

## Studying MADE Easy

2 hour workshop for all students, covering independent learning and study

2

## Year 10 PPEs

'Mock' exams in all subjects  
16th - 27th June

3

## Exams MADE Easy

2 hour workshop for all students, covering revision and recall strategies.  
October-November 2025

4

## Year 11 Progress Evenings

Meet with your child's teachers and find out more about their strengths, areas for development and attitude to learning.  
November 2025 and February 2026 (dates TBC)

5

6

## Year 11 PPEs

'Mock' exams in all subjects.  
January 2026.

7

## GCSE Exams

May - June 2026  
GCSE results day 20th August 2026



## In-house support

Morning meetings commence (July 2025)  
Lunchtime and after-school intervention commences (September/ October 2025)  
Year 11 Study Space opens (July 2025)



# Attendance & Outcomes



## The national picture:

Attendance <90%: 78% 5+ GCSEs including English and maths

Attendance >90%: 36% 5+ GCSEs including English and maths

Attendance >50%: 5% 5+ GCSEs including English and maths\*



## The Icení picture:

Attendance <90%: 77% 5+ GCSEs including English and maths

Attendance >90%: 34% 5+ GCSEs including English and maths

Attendance >50%: 6% 5+ GCSEs including English and maths



*\*The Children's Commissioner, 'Missing children, missing grades', November 2023*



# Punctuality & Outcomes



Even if attendance = 100% (at school every day)...

Being late to each lesson by an average of 5 minutes = 92% attendance

Being late to each lesson by an average of 9 minutes = 85% attendance

# Intervention & Outcomes

**GCSEPod:** Highest users nationally achieved 2 grades higher than predicted

**Seneca:** In a randomised control trial, students who used Seneca achieved 2x more marks than students who only used revision guides

**In-house:** Students who attended the most intervention sessions performed almost one grade better in all subjects than students who attended zero sessions.

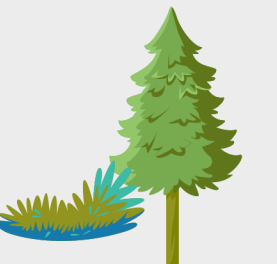




# Attendance & Outcomes



High attendance  
High attitude to learning  
High outcomes



# Target Grades



- Minimum target: not a limit, but a guide
- Based on CAT4 tests (no SATS)
- What do students like your child, nationally, achieve at the end of Year 11?



# Attitude to Learning



**1** Very poor effort

**2** Poor effort

**3** Variable effort from lesson to lesson

**4** Good effort in most lessons

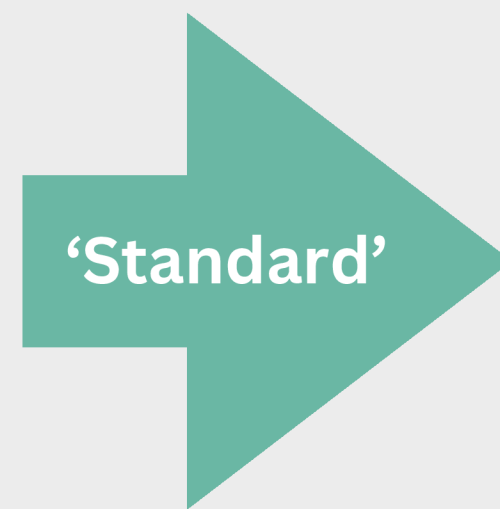
**5** Excellent effort in majority of lessons

**6** Superb effort in all lessons and outside of lessons

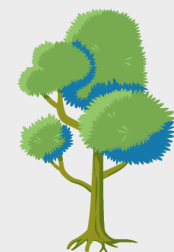
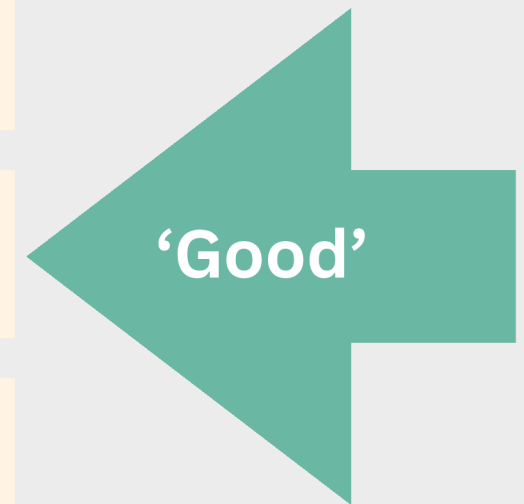


# PEGs

- ‘Predicted End Grade’
- Based on all available evidence, what is the teacher’s best professional prediction on that student’s final result at this point in time?

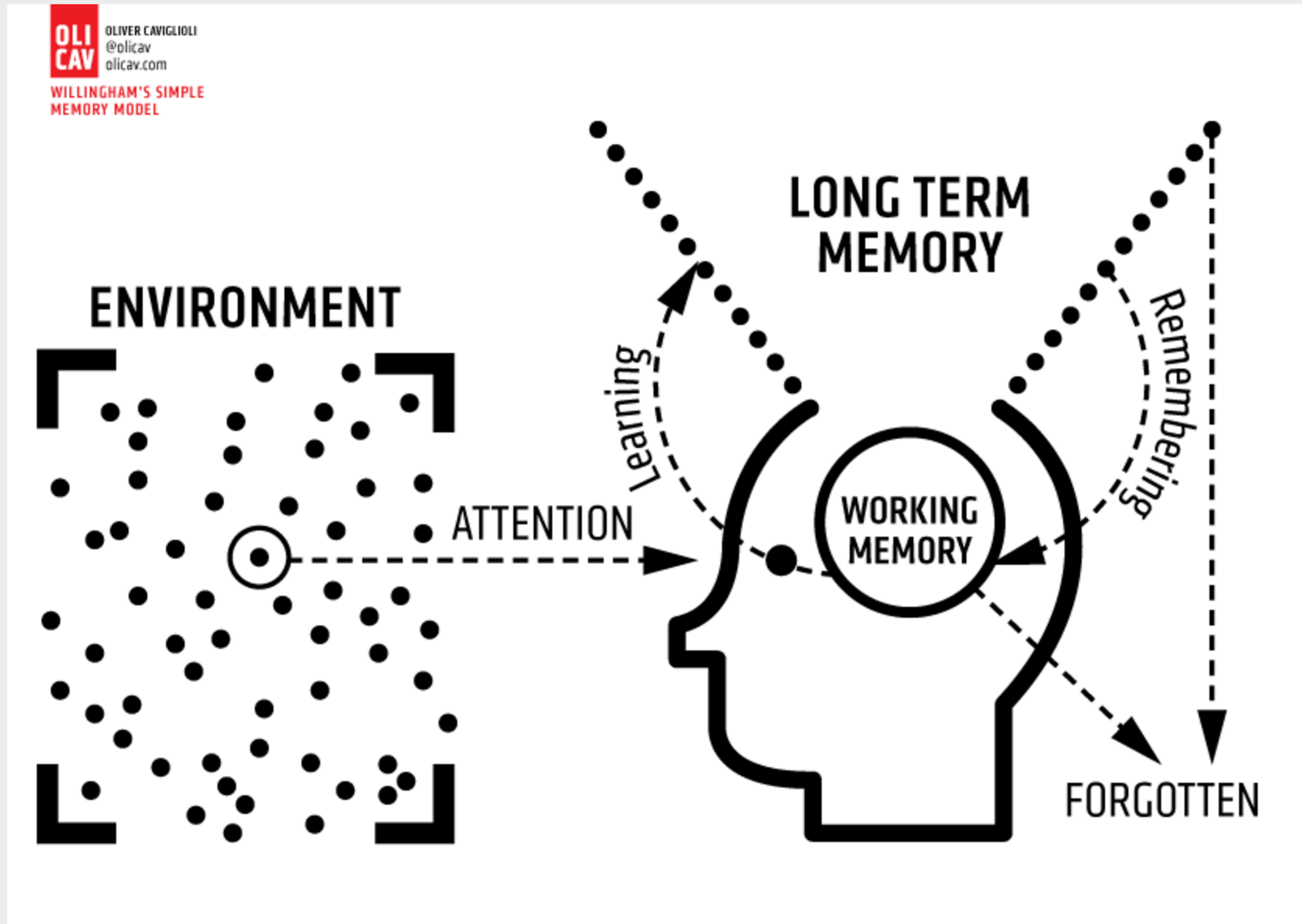


New Grade	Old Grade
9	“A**”
8	A*
7	A
6	B
5	B/C
4	C
3	D
2	E/F
1	G

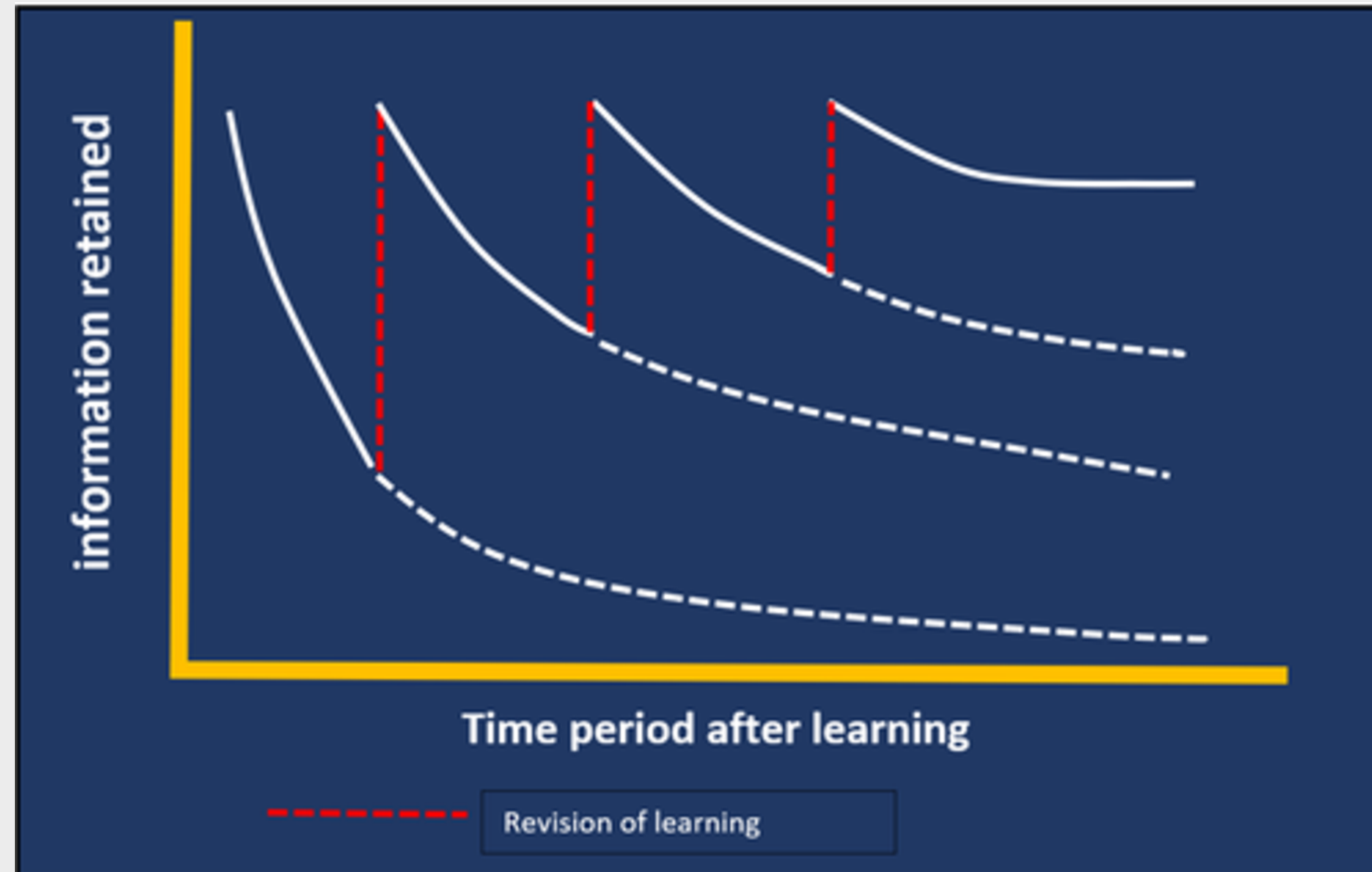




# Revision: How does memory work?



# Revision: Ebbinghaus' Forgetting Curve



# Revision: Getting the conditions right





# Revision: What to revise?

- Links to specifications on the website
- Links to curriculum topics on the website
- QLAs available in some subjects (maths)
- Start with the knowledge you find the hardest!





# Revision: When to revise?



- Little and often, from now
- Building good habits **and** gaming our brains in terms of how memory works
- 30 minutes per day, building up to two+ hours per day this time next year





# Revision: How to revise?

- Online platforms: Seneca Learning and GCSEPod
- Flashcards
- Mindmaps/ spider diagrams
- Rhymes, stories and mnemonics
- Practice questions
- Spaced practice/ interleaving



# Seneca Learning



- Online and via an app
- All internet enabled devices
- <https://help.senecalearning.com/en/collections/1434432-parent-faqs>
- Adapts based on student strengths/ areas for development
- Email address is their Icenis username + @attrust.org.uk (e.g. 17-StudentE-ICE@attrust.org.uk). Password was sent via email.



# Seneca Learning: Report Cards

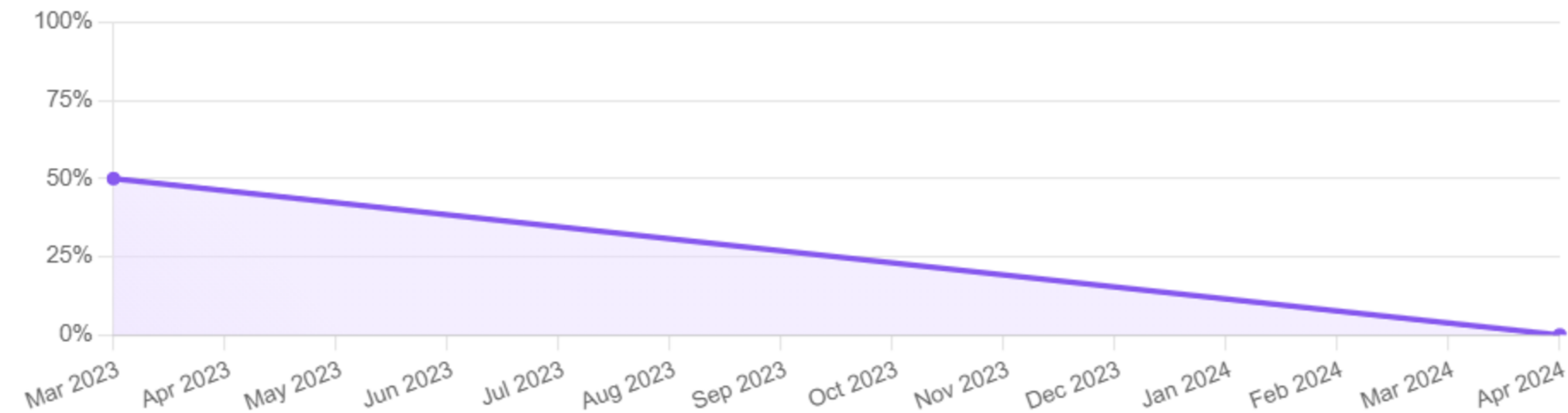


📅 01 Jan 2018 -

👤 Mrs Roman

📖 Geography, Biol  
Language

## Performance over time



h, English

## Summary

- Stephanie has co
- Stephanie's aver

🕒 Study time  
**5min**

## Average score

### ⚡ Strengths

Maths - Chords

100%

Maths - Properties of a Circle 1

100%

### 📖 Weaknesses

Maths - Circle Formulae

0%

Maths - Properties of a Circle 2

0%

ompletion  
%





# GCSEPod



- GCSEPod.com
- App available via the app store
- Pods can be downloaded over WiFi to watch later
- Some students have already signed up! If they have forgotten their username/password, they should email me directly.



# GCSEPod



Student Learning Activities

English Literature / Drama

## An Inspector Calls

Progress

All Groups

An Inspector Calls by J. B. Priestley - Characters Start	An Inspector Calls by J. B. Priestley - Context Start	An Inspector Calls by J. B. Priestley - Methods Start
An Inspector Calls by J. B. Priestley - Themes Start	An Inspector Calls by J. B. Priestley - Characters 1 Continue	An Inspector Calls by J. B. Priestley - Characters 2 Start
An Inspector Calls by J. B. Priestley - Context Continue		

An Inspector Calls: Plot Overview

00:00 / 04:24

Providing the highest-quality content and assessment, teachers know they can

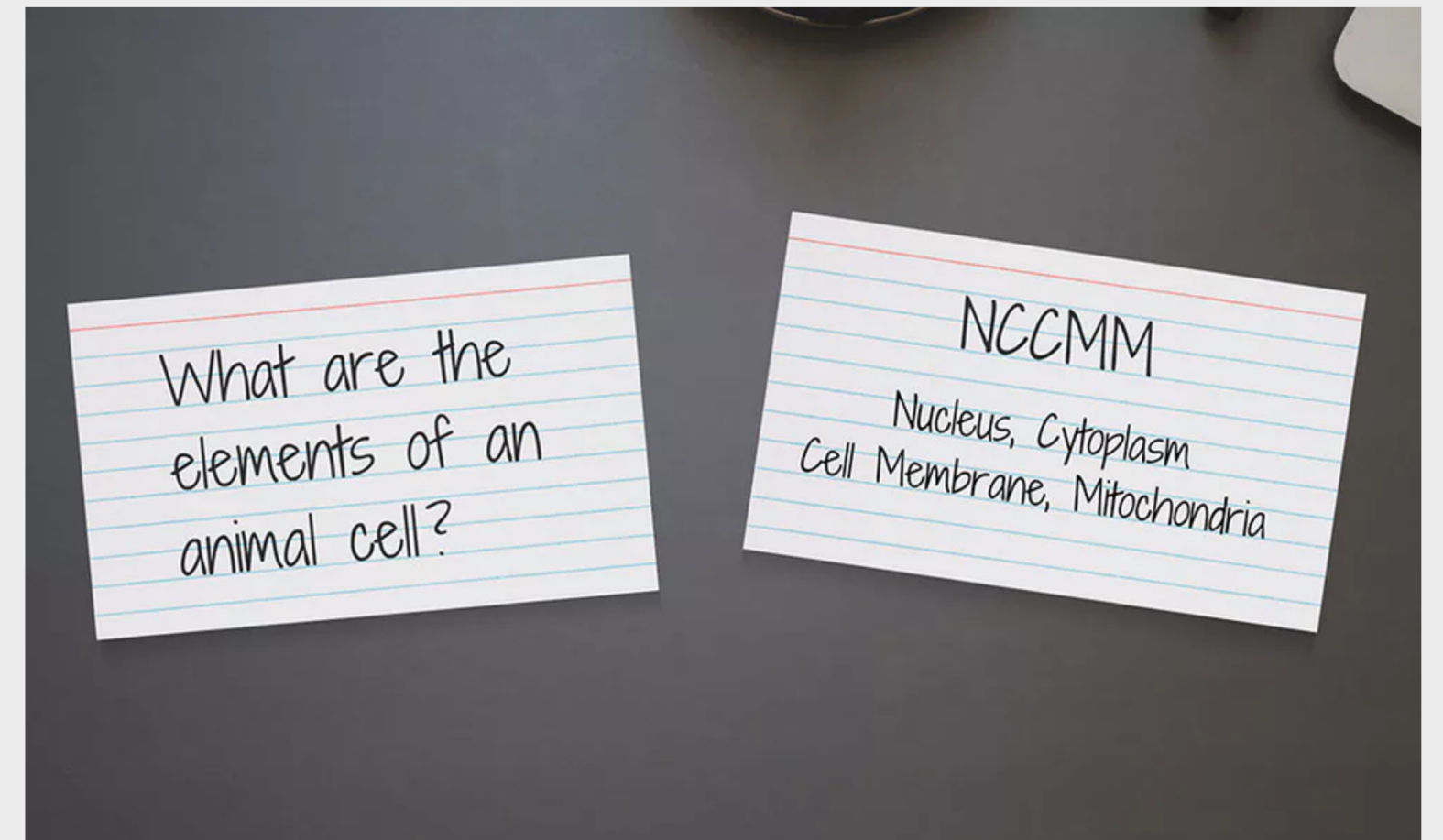
GCSEPod



# Flashcards



- Question on one side, answer on the other
- Topic on one side, brief notes on the other
- Use colour/ highlighting to identify most salient points



# Flashcards



## Leitner System – The Method

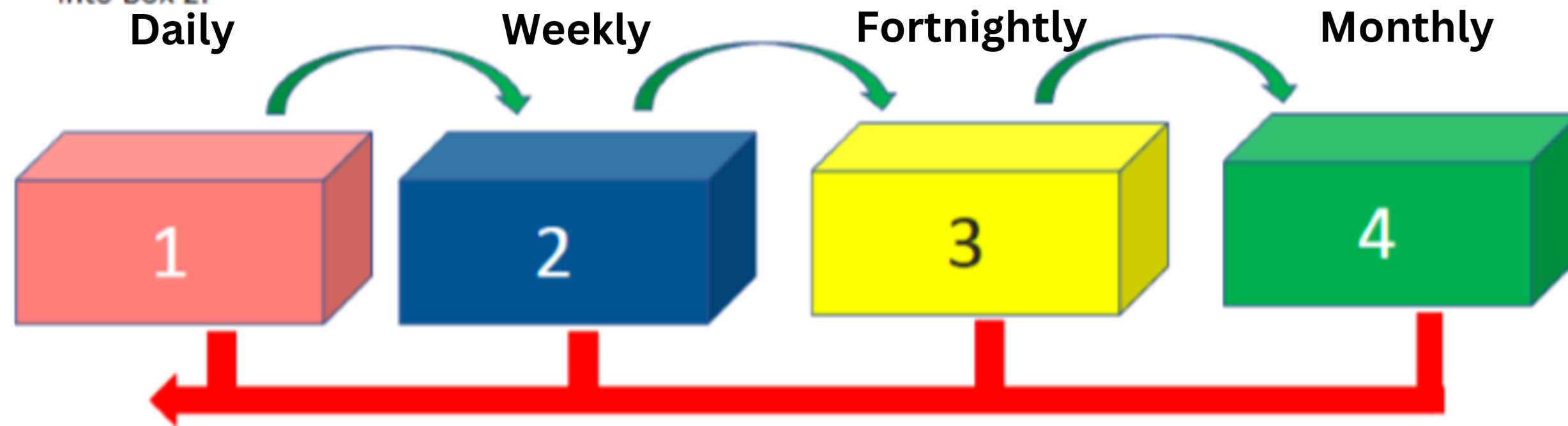
All flash cards start off in Box / Stack 1.

As you review the cards, each card you answer correctly goes into Box 2.

If you give the wrong answer the card stays in box 1.

When you review cards in Box 2, if you still get it right you move the card to box 3 and so on until all cards are in Box 4.

If you get a card wrong in any box, it goes back to Box 1.





# Pastoral support



- Form tutor
- SSO - Mr Spurgeon
- HoY - Ms Agoudjil
- Safeguarding Team - Miss Bartrum, Mr Cooper, Mrs Walker, Mr Rushton
- SEND team - Miss Turner, Mrs Warren and HLTAs/LSAs
- Subject teachers, subject leaders, SLT



# Pastoral support



<p><b>YoungMinds</b> Text YM to 85258 for free, 24/7 support</p>	<p><b>Kooth</b> <a href="http://www.kooth.com">www.kooth.com</a> 7 days a week, until 10.00pm</p>	<p><b>Thrive App</b> Tools to manage wellbeing</p>	<p><b>ChatHealth</b> Text 07480 635060</p>
--	---	--	--



# Next time...



Calendar updates

Year 10 mocks and how to prepare



More revision strategies - subject specific

Wellbeing and self-care



# Thank you!